



**One Platform.
Endless Possibilities.**

May 2022

NASDAQ: RCEL

ASX: AVH



Certain statements in this presentation and the accompanying oral commentary are “forward-looking statements” within the meaning of the Private Securities Litigation Reform Act of 1995. All statements other than statements of historical facts contained in this presentation, including statements regarding our future financial condition, technology platform, development strategy, prospective products, pipeline and milestones, regulatory objectives, expected payments from and outcomes of collaborations, and likelihood of success, are forward-looking statements. Such statements are predictions only and involve known and unknown risks, uncertainties and other important factors that may cause our actual results, performance or achievements to be materially different from any future results, performance or achievements expressed or implied by the forward-looking statements. These risks and uncertainties include, among others, the costs, timing and results of clinical trials and other development activities; the uncertainties inherent in the initiation and enrollment of clinical trials; the uncertainties associated with the COVID-19 pandemic; the unpredictability of the timing and results of regulatory submissions and reviews; market acceptance for approved products and innovative therapeutic treatments; competition; the possible impairment of, inability to obtain and costs of obtaining intellectual property rights; and possible safety or efficacy concerns, general business, financial and accounting risks and litigation. Because forward-looking statements are inherently subject to risks and uncertainties, some of which cannot be predicted or quantified and some of which are beyond our control, you should not rely on these forward-looking statements as predictions of future events. More information concerning AVITA Medical as well as the aforementioned risks and uncertainties is available in our public filings with the U.S. Securities and Exchange Commission, including our most recent Quarterly Report on Form 10-Q for the quarter ended March 31, 2022, and our most recent Transition Report on Form 10-KT period from July 1, 2021 to December 31, 2021. We are providing this information as of its date and do not undertake any obligation to update or revise it, whether as a result of new information, future events or circumstances or otherwise, except as required by law. Additional information may be available in press releases or other public announcements and public filings made after the date of this presentation.

AVITA Medical’s products are Rx only. Please reference the Instructions for Use for more information on indications, contraindications, warnings, precautions and adverse events.

In the United States, RECELL® is approved for use in patients suffering acute thermal burns. Use of RECELL in other patient populations is either prohibited by United States law or may be made available pursuant to a relevant investigational device exemption granted by the FDA (and likewise limited by United States law to investigational use only).

Transforming Lives with Skin Regeneration

- **RECELL® System: FDA approved for the treatment of acute thermal burns**
 - Proprietary Spray-On Skin™ offers life changing benefits
 - Point of care technology that is safe & effective
 - Published health economic model demonstrating hospital cost savings
- **Deep scientific and clinical pedigree**
 - 2 randomized controlled trials + and 1st PMA in burns in > 20yrs
 - >15,000 patients, >330 publications and presentations
- **Ongoing platform expansion: Multi-billion U.S. market opportunity**
 - Platform technology with numerous adjacent applications
 - PMA label expansion underway with two (2) pivotal studies ongoing with enrollment completed
 - Proof of concept established for cell-based gene therapy and aesthetics

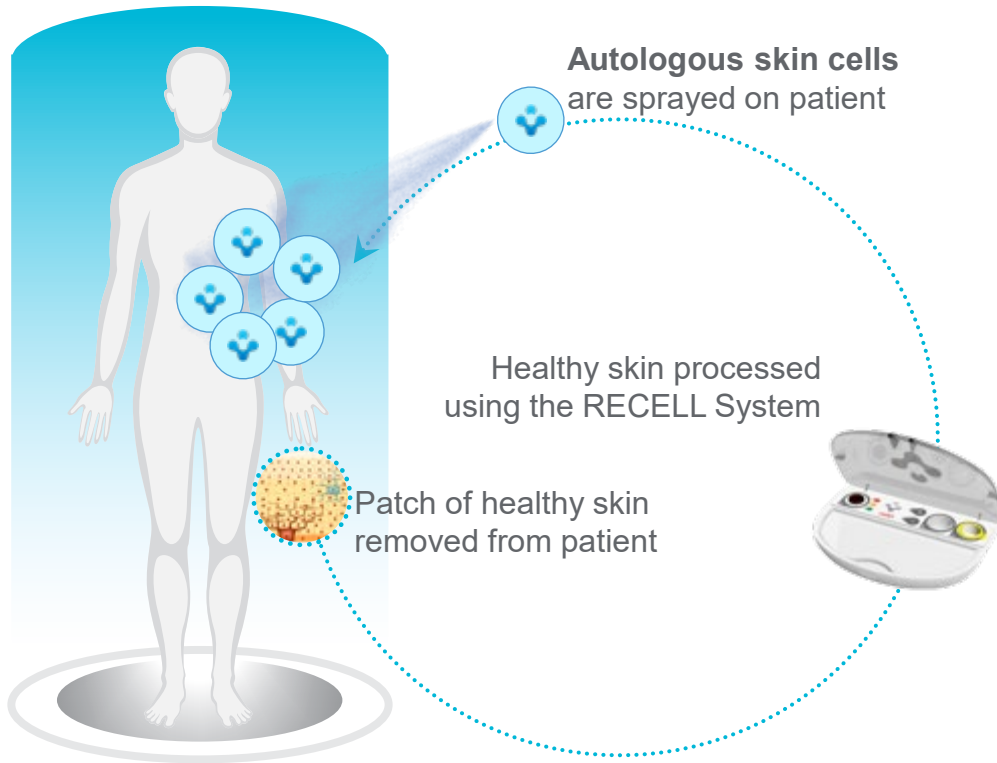


**Revolutionary treatment using
a patient's own skin for
life-changing outcomes**

One Platform. Endless Possibilities.



RECELL delivers healthy skin cells



Free cells modulate and catalyze the healing process

RECELL enables regeneration of healthy skin



SKIN RESTORED

Technology platform benefits a wide array of skin defects and wounds irrespective of etiology

Vitiligo

Trauma

Burns / Scalds

Chronic Wounds

Scar Revision

Infectious Disease

Cancer Reconstruction

Genodermatoses

Regenerative Dermatology

Recent Key Accomplishments



- First Quarter 2022 Revenue Growth of +61% YoY
- FDA Approval of New “Ease of Use” RECELL Device
- Vitiligo Pivotal Trial: Enrollment Complete
- Soft Tissue Pivotal Trial: Enrollment Completed
- TPT Payment Created by CMS for Hospital Outpatient Setting
- PMDA Approval of Burns in Japan
- Initial Proof of Concept for EB and Rejuvenation (Delivery of Modified Skin Cells in Suspension)

Projected Key Milestones



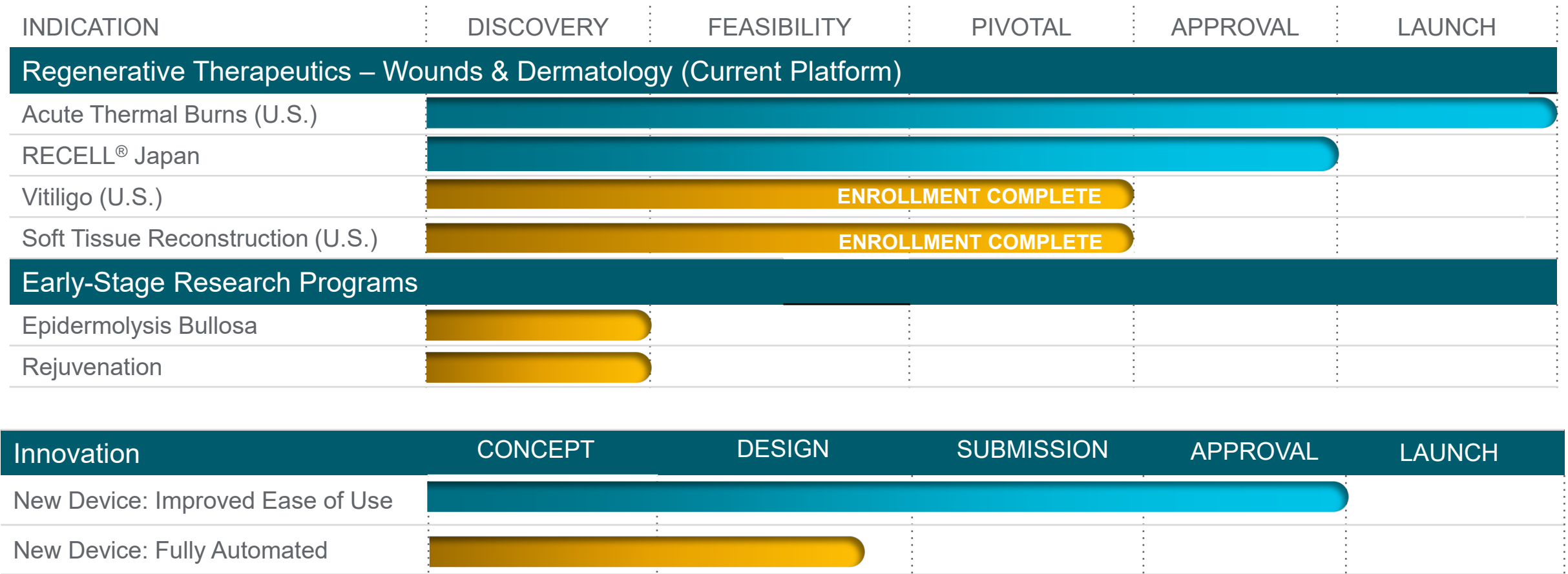
- | | |
|---|-----------------|
| • Launch of New “Ease of Use” RECELL Device | Q2 '22 |
| • FDA Meeting Regarding IND Enabling Studies (EB & Rejuvenation) | H2 '22 |
| • Reimbursement & Launch of Burns in Japan | H2 '22 |
| • Top Line Results and Vitiligo FDA Submission / Vitiligo Commercial launch | H2 '22 / H2 '23 |
| • Top Line Results and Soft Tissue FDA Submission / Soft Tissue Commercial Launch | H2 '22 / H2 '23 |



Development Pipeline and Growth Potential

avita^{medical}

Focused Pipeline with Strong Growth Potential



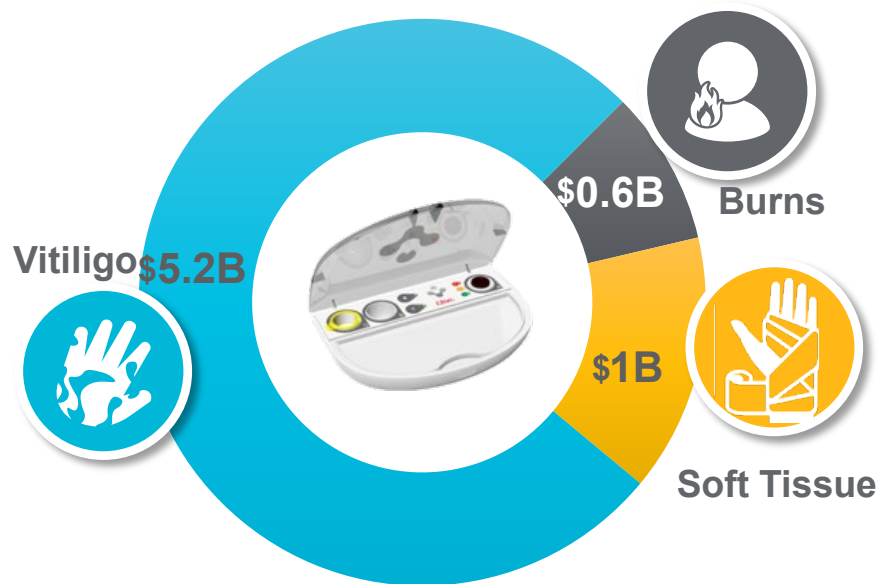
Focused Effort on Business Development to Supplement Pipeline

In the U.S., RECELL is approved for acute thermal burns. Use of RECELL in other indications is either (1) limited by United States law to investigational use; or (2) otherwise prohibited.

Market Opportunity of Pipeline Exceeds \$22 Billion

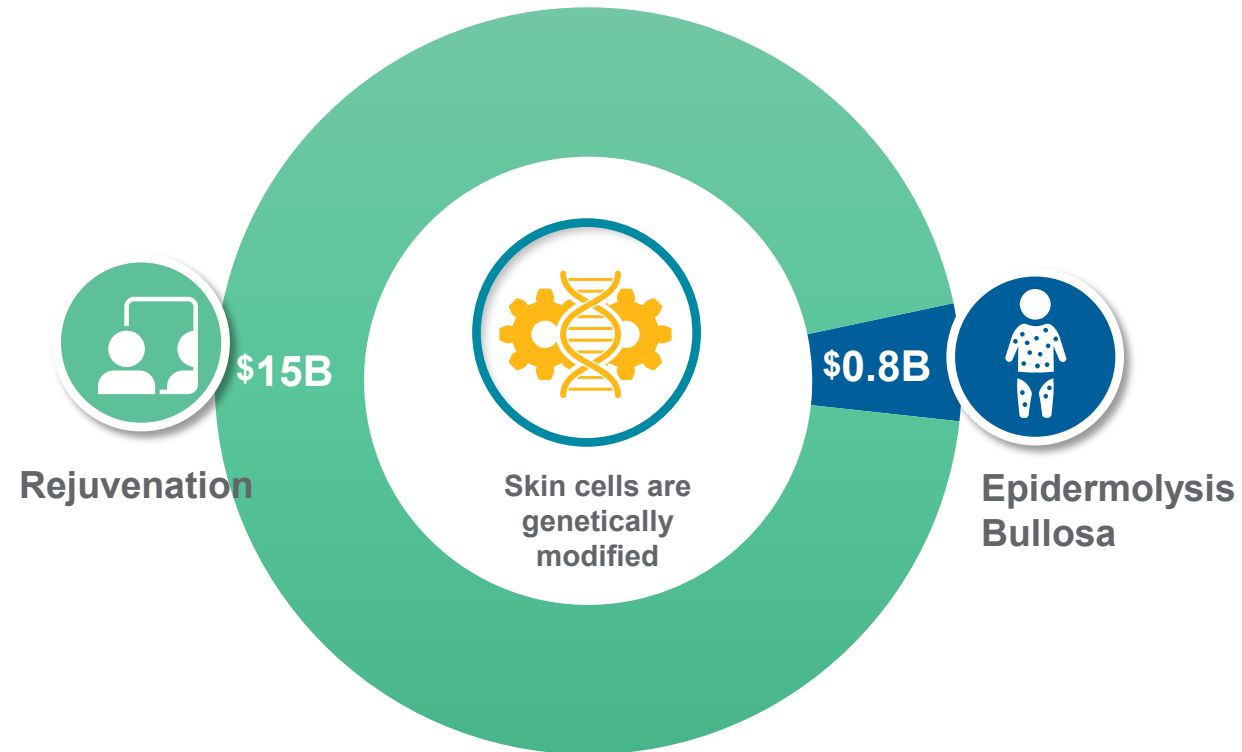
EXISTING PLATFORM

~\$6.8B Opportunity



NEW PLATFORMS: CELL BASED GENE THERAPY

~\$15.8B Opportunity



> \$22 Billion in Combined TOTAL ADDRESSABLE MARKET

Current Platform: Efficacy is Well Demonstrated

PRODUCT IS WELL STUDIED

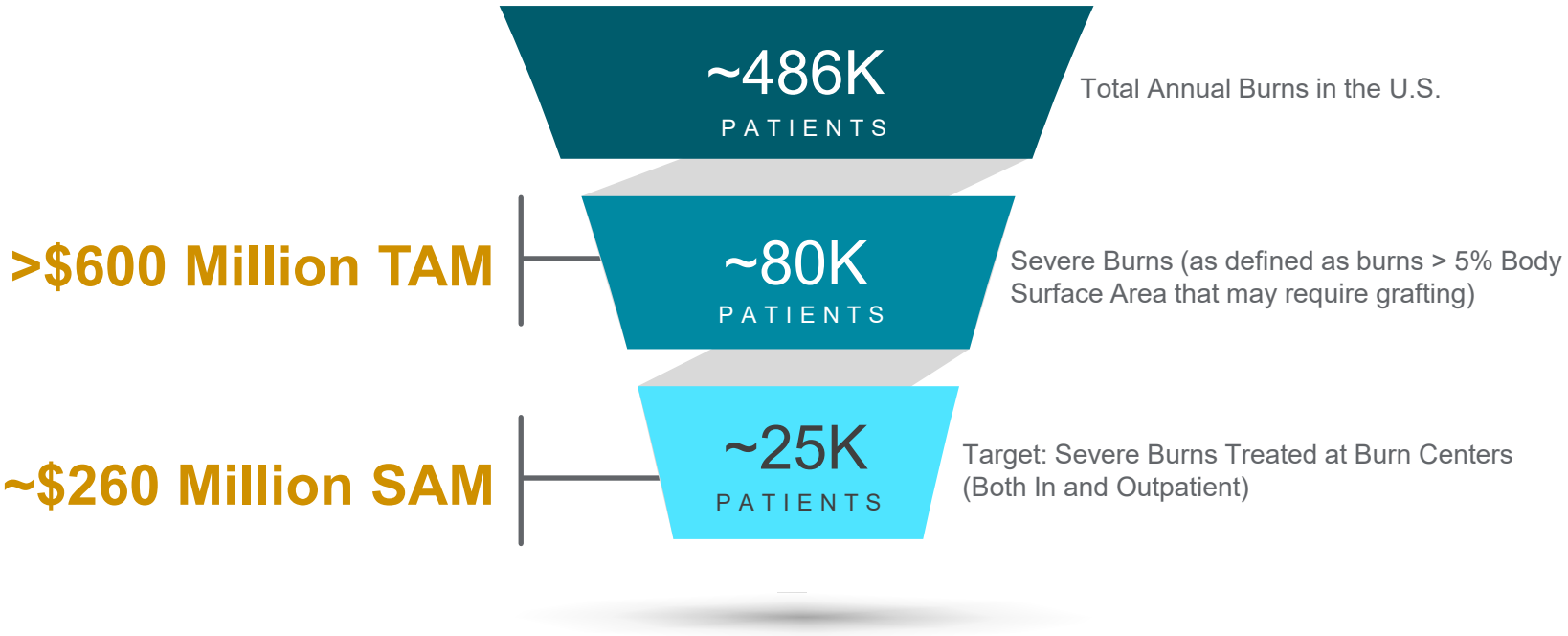
	Patients (in Published Studies)	Number of Publications & Presentations
ACUTE WOUNDS <i>(Including Thermal Burns)</i>	1,839	255
DEFECTS/ VITILIGO	453	58
CHRONIC WOUNDS	143	19

Highly De-risked
Pipeline with
>15,000 Patients
Treated Globally

A Common Goal: Full Skin Restoration (Re-epithelialization and Re-pigmentation)

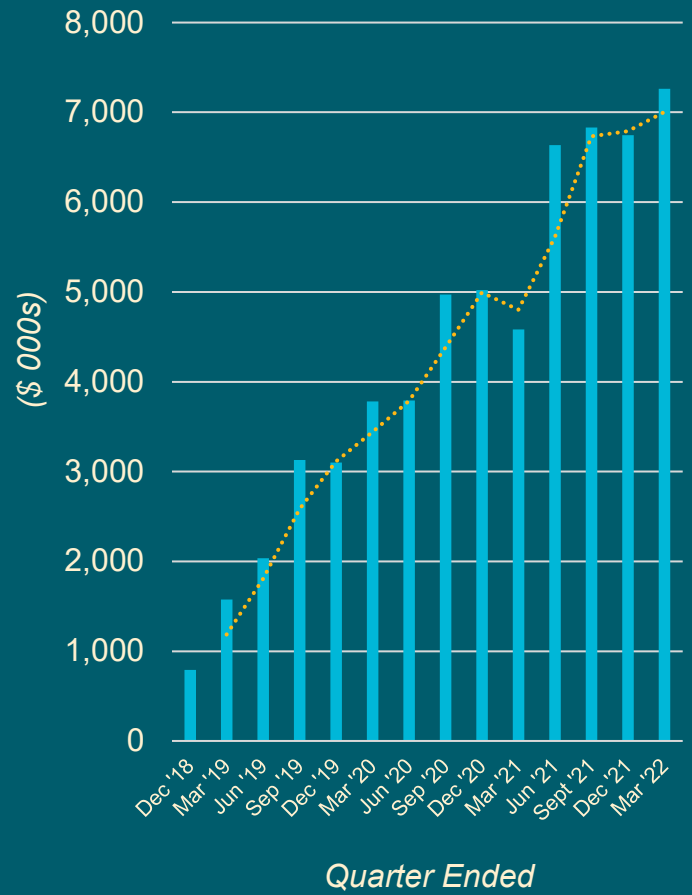
Thermal Burns: U.S. Target Market Expanded to Include Small Burns and Outpatient

Patient Funnel and Addressable Market



Outpatient Pass Through Code Opens Doors to Small Burns and Expands Serviceable Market Opportunity

U.S. RECELL Commercial Sales Since Approval



New C-Code Provides Additional Payment in the Outpatient Setting

The Centers for Medicare and Medicaid Services (CMS) created a new technology Transitional Pass-Through (TPT) Payment - C Code for billing RECELL devices when used in procedures performed in the hospital outpatient and ambulatory surgery center (ASC) settings as of Jan 1 2022



C1832:

Autograft suspension, including cell processing and application, and all system components



Code provides additional payment which offsets the cost of the device for Medicare beneficiaries over a 2-3 year period before converting to a permanent code



This is a Medicare specific code, which we estimate covers ~ 15% of patient lives



AVITA will ensure broad commercial payer acceptance & coverage before pursuing a full commercial launch

The New Code is not Indication (Burns) Specific and Lays the Foundation for Growth in Soft Tissue

New Ease of Use Device Now FDA Approved

New Device



Reduced
number of steps

Simplified
Process

Improved
Usability

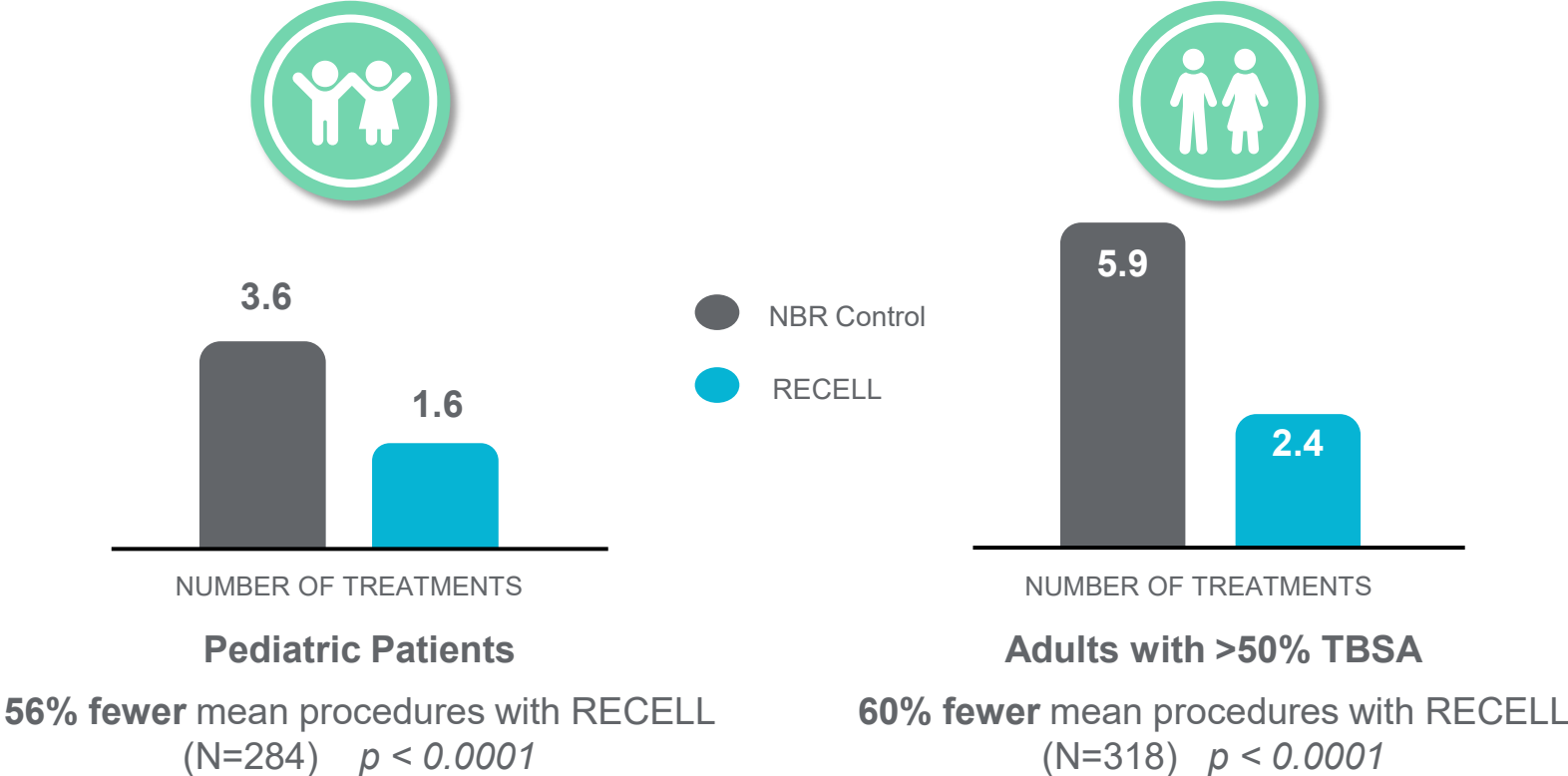


94% of surveyed
users of the
RECELL System
believe it will
**reduce their
workload/allow
them to perform
other duties***

Only 1 Set of Hands Required in the Sterile Field; Steps Reduced By 33%

FDA Approval in Pediatric Full-Thickness & Larger Burns

FEWER PROCEDURES REQUIRED FOR DEFINITIVE CLOSURE VS CONVENTIONAL AUTOGRAFT¹



~25% of all burns occur in children

80% of RECELL Customers Stated that these New Label Enhancements Will Positively Impact Their Usage of RECELL*

1. Instructions for Use. RECELL® Autologous Cell Harvesting Device
2. NBR – National Burns Repository
* N = 41, “will significantly or somewhat impact RECELL usage”

Approval of Burns Received in Japan

BACKGROUND



AVITA Commercial Partner:
COSMOTEC, an M3 Company

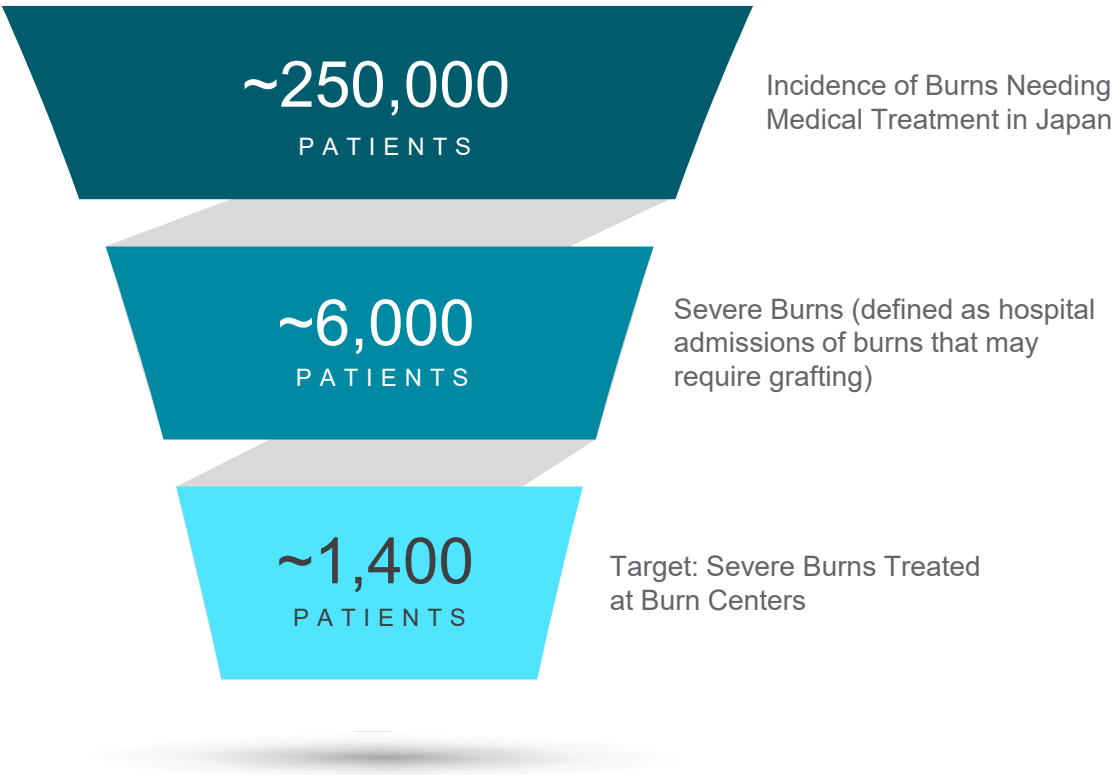


INDICATION: Burns
Soft Tissue and Vitiligo to Follow Based on U.S. Pivotal Clinical Data



LAUNCH:
Following Ministry of Health, Labour, and Welfare (MHLW) decision on reimbursement pricing, anticipated Q4 2022

PATIENT FUNNEL - BURNS ADDRESSABLE MARKET



Reimbursement and Commercial Launch Anticipated in Q4 2022

Vitiligo: High Unmet Need, No FDA-Approved Products

SIGNIFICANT UNMET NEED

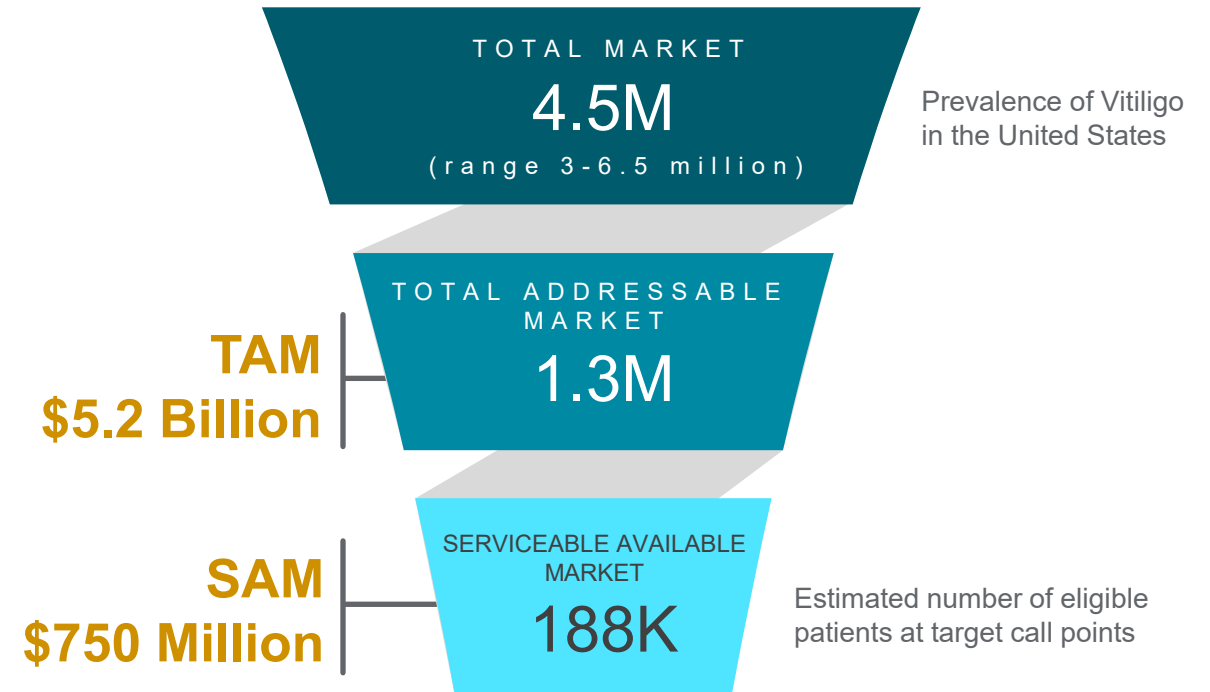
Up to 2% of the population affected



No FDA-approved medical treatments;
extremely low patient and physician satisfaction with existing products

Vitiligo impacts quality of life (QoL) –
25% of patients with vitiligo reported a DLQI >10, which indicates severe QoL reductions, compared with 34% in psoriasis patients

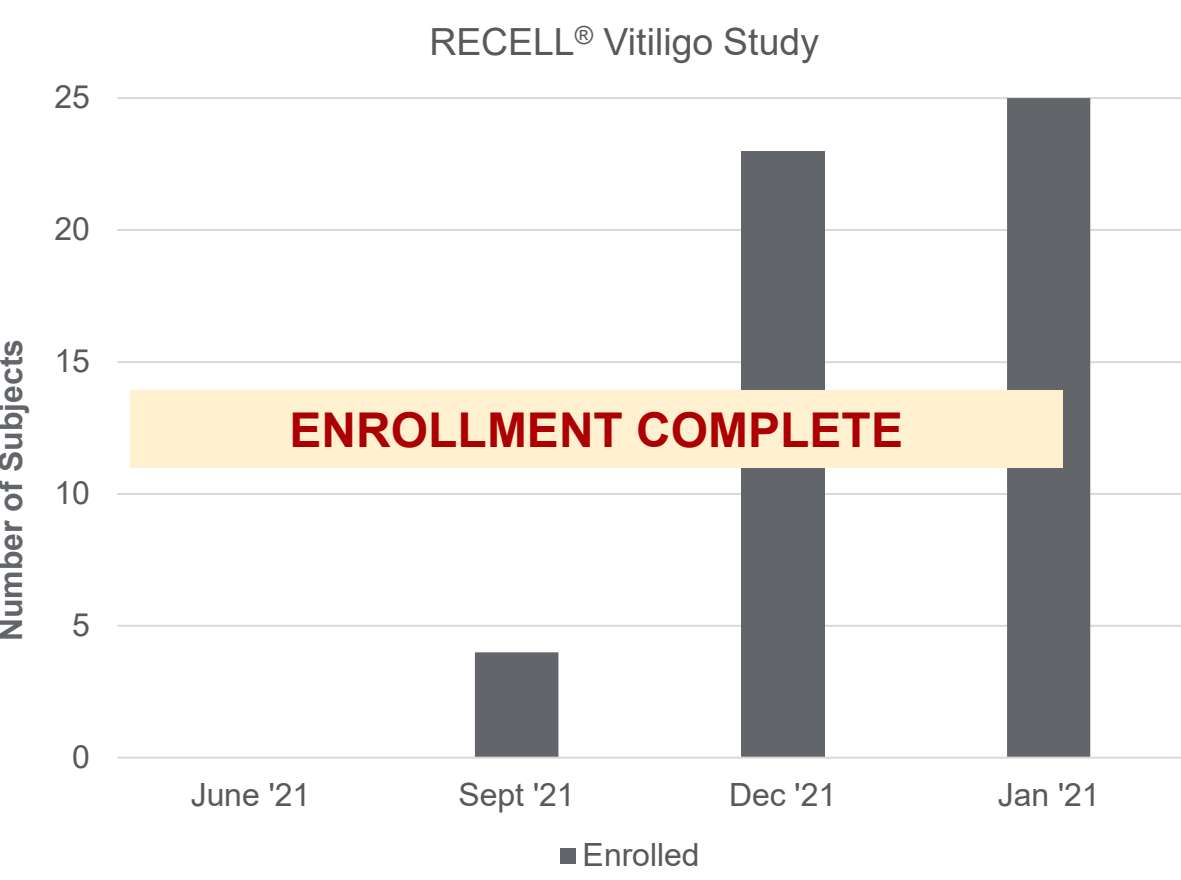
OPPORTUNITY ESTIMATION



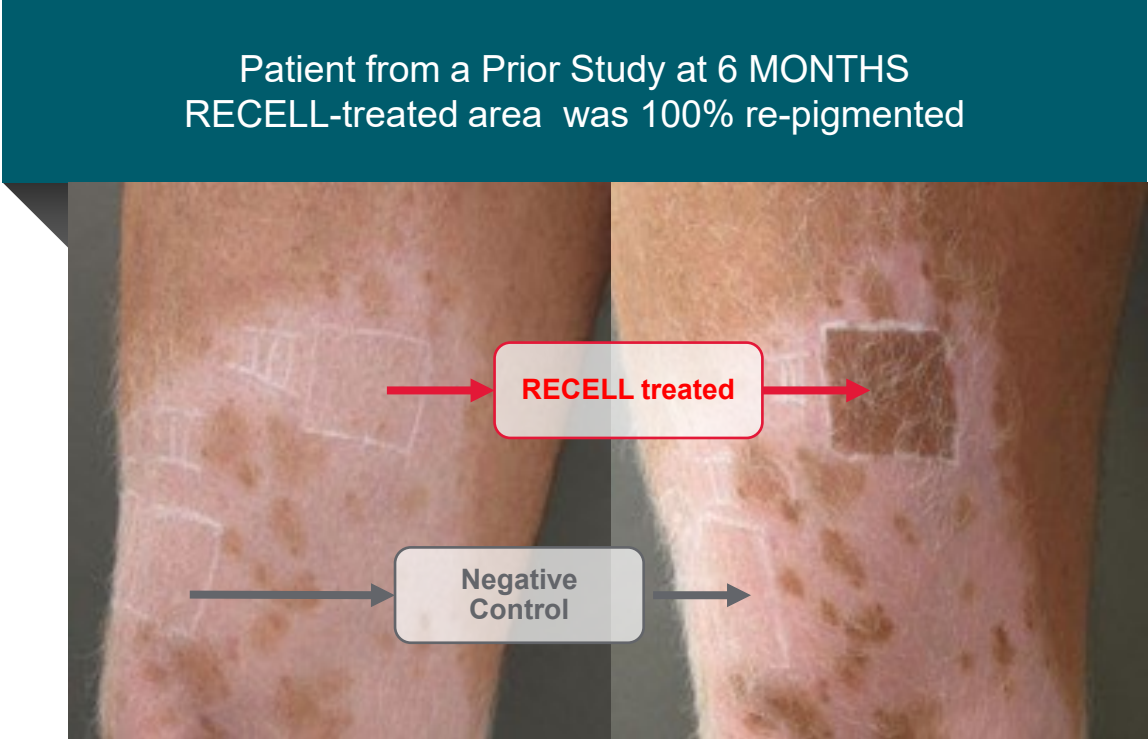
Concentrated HCP base: Estimating <1,000 procedural dermatologists and plastic surgeons with interest in treating vitiligo

Vitiligo Study Enrollment Complete

Blinded, Randomized, Study Evaluating RECELL for Repigmentation of Stable Vitiligo



FDA Submission Expected in H2 '22 with Approval in H2 '23

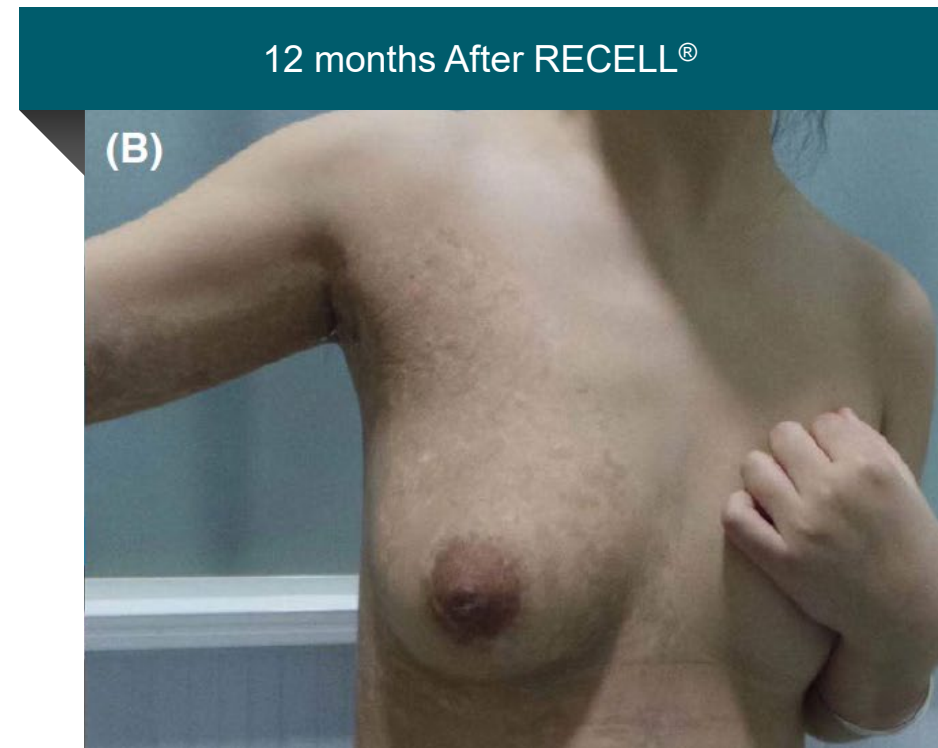


Komen L, Vrijman C, Tjin EP, Krebbers G, de Rie MA, Luiten RM, van der Veen JW, Wolkerstorfer A. Autologous cell suspension transplantation using a cell extraction device in segmental vitiligo and piebaldism patients: a randomized controlled pilot study. Journal of the American Academy of Dermatology. 2015 Jul;73(1):170-2.

POTENTIAL RECELL BENEFITS

For Stable Vitiligo: Segmental & Non-Segmental	Durable: One-time treatment
---	-----------------------------

RECELL Case: Repigmentation of the Nipple-Areola Complex

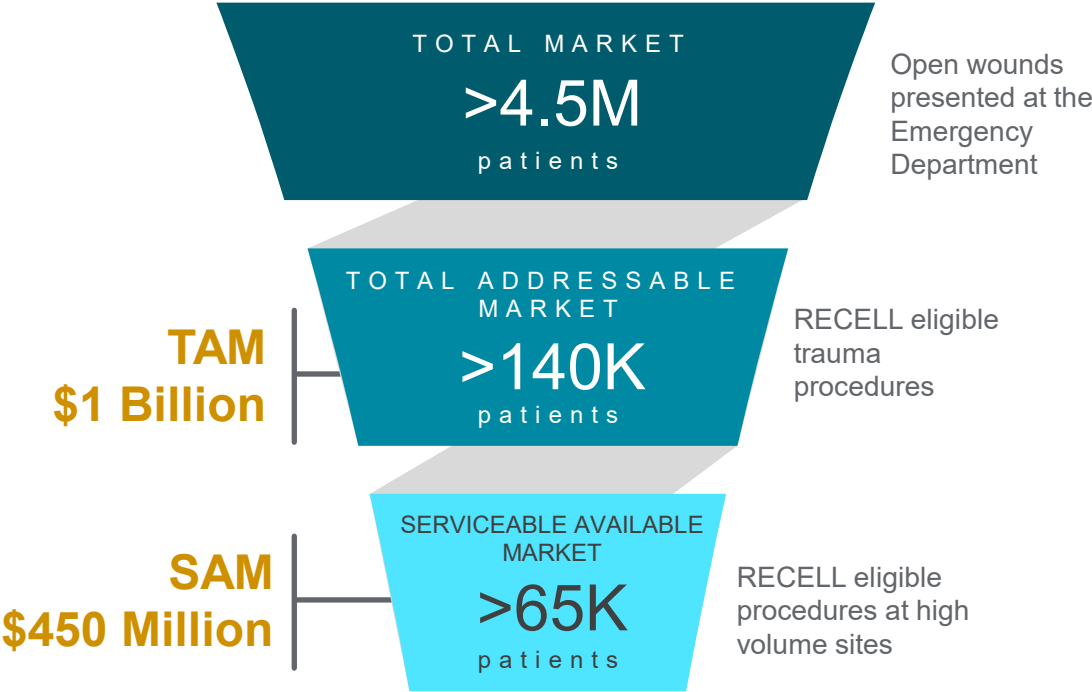


- 23 year old female with vitiligo.
- Donor skin was harvested from adjacent unaffected areas.
- Depigmented epidermis was removed using dermabrasion.
- The cellular suspension was then sprayed on both the recipient and donor areas (expansion ratio ranged from 1:20-1:40).

Established Track Record in Vitiligo: 1,000 patients treated internationally & 12 peer-reviewed publications showing positive outcomes

Soft Tissue Repair Will Expand the Burns Business to Encompass All Acute Wounds

OPPORTUNITY ESTIMATION



Female, pregnant 28-year-old who suffered from a de-gloving Injury



POST DEBRIDEMENT OF INJURY



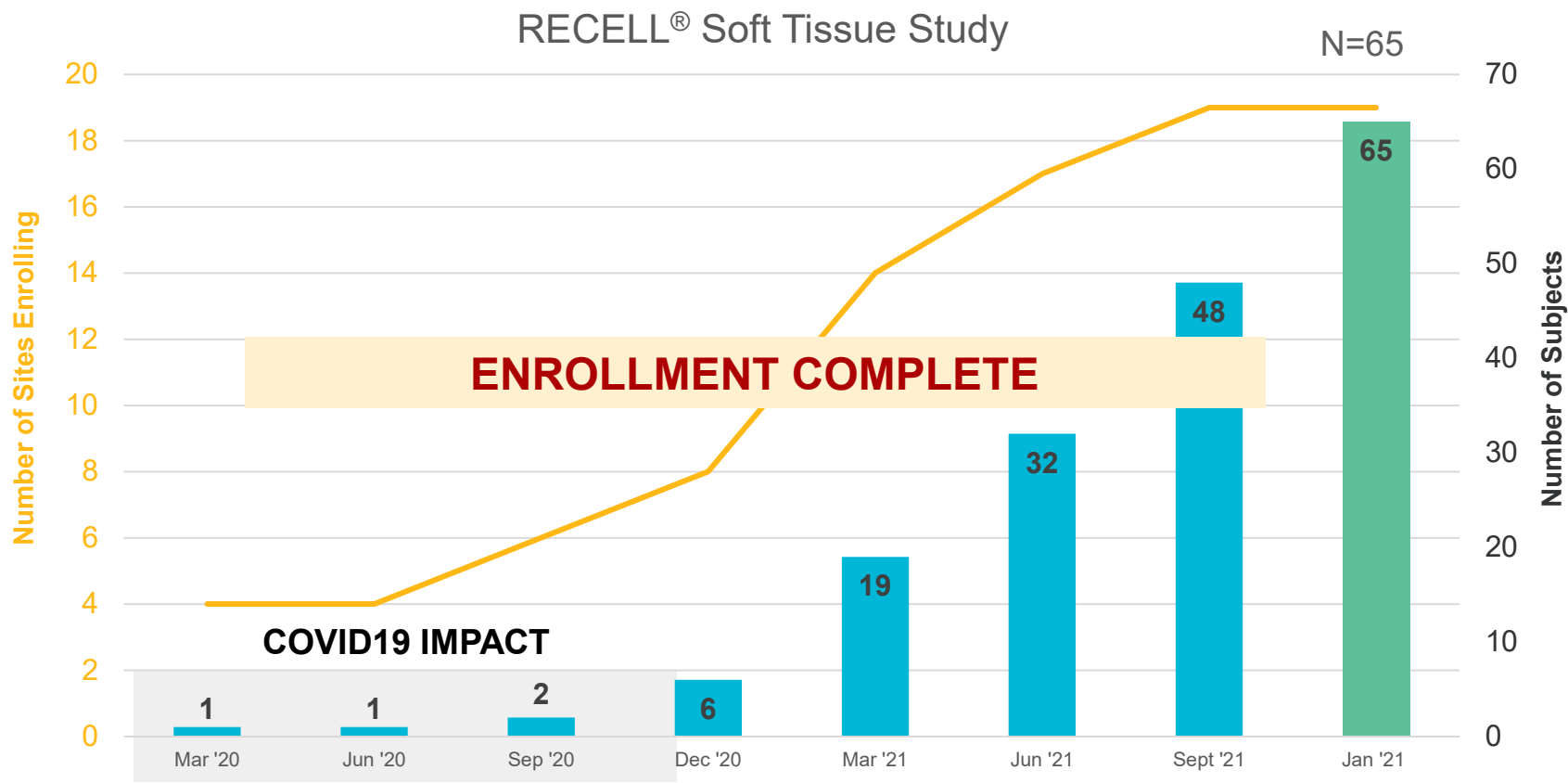
6 MONTH POST-RECELL TREATMENT

In the U.S., RECELL is approved for acute thermal burns. Use of RECELL in other indications is either (1) limited by United States law to investigational use; or (2) otherwise prohibited. In the United States, RECELL is not approved for use in pediatrics. Use of RECELL in this case was performed internationally where the indication is approved.

Poster: Use of regenerative suspension in the treatment of a complex de-gloving injury. Ian M Smith,

Early Completion of Soft Tissue Reconstruction Trial

Clinical trial demonstrates use of less donor skin without compromising healing outcomes relative to conventional autografting



FDA Submission Expected in H2 '22 with Approval in H2 '23

Patient treated for necrotizing fasciitis



TREATMENT DAY



1 YEAR POST-RECELL TREATMENT

In the U.S., RECELL is approved for acute thermal burns. Use of RECELL in other indications is either (1) limited by United States law to investigational use; or (2) otherwise prohibited.

Photos courtesy of Kevin Foster, Valleywise Health Medical Center

Soft Tissue Synergies with Current Commercial Burn Focus

Expanded Acute Wounds Sales Team Will
Target a Total of 366 Centers

~50% of Burn
Centers are also
Level 1 / Level 2
Trauma Centers



- Reimbursement in Place**
Able to leverage existing CPT & Outpatient C Code
- Same Treatment Protocol to Burns**
Consistent treatment protocol across acute injuries
- Same Unmet Needs as Burns**
Reduction of donor site morbidity & donor site requirements are top unmet needs

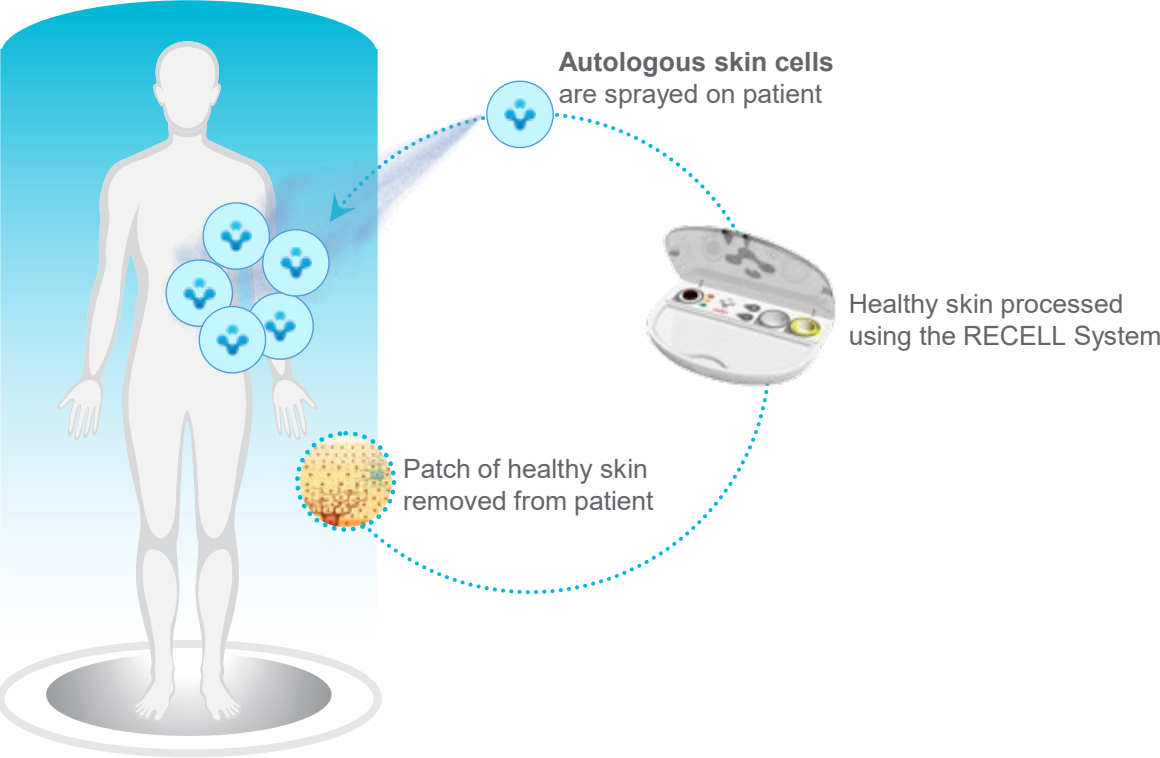
Large opportunity that leverages existing burns infrastructure

In the U.S., RECELL is approved for acute thermal burns. Use of RECELL in other indications is either (1) limited by United States law to investigational use; or (2) otherwise prohibited. In the United States, RECELL is not approved for use in pediatrics. Use of RECELL in this case was performed internationally where the indication is approved.

RECELL in Genetic Skin Defects and Rejuvenation

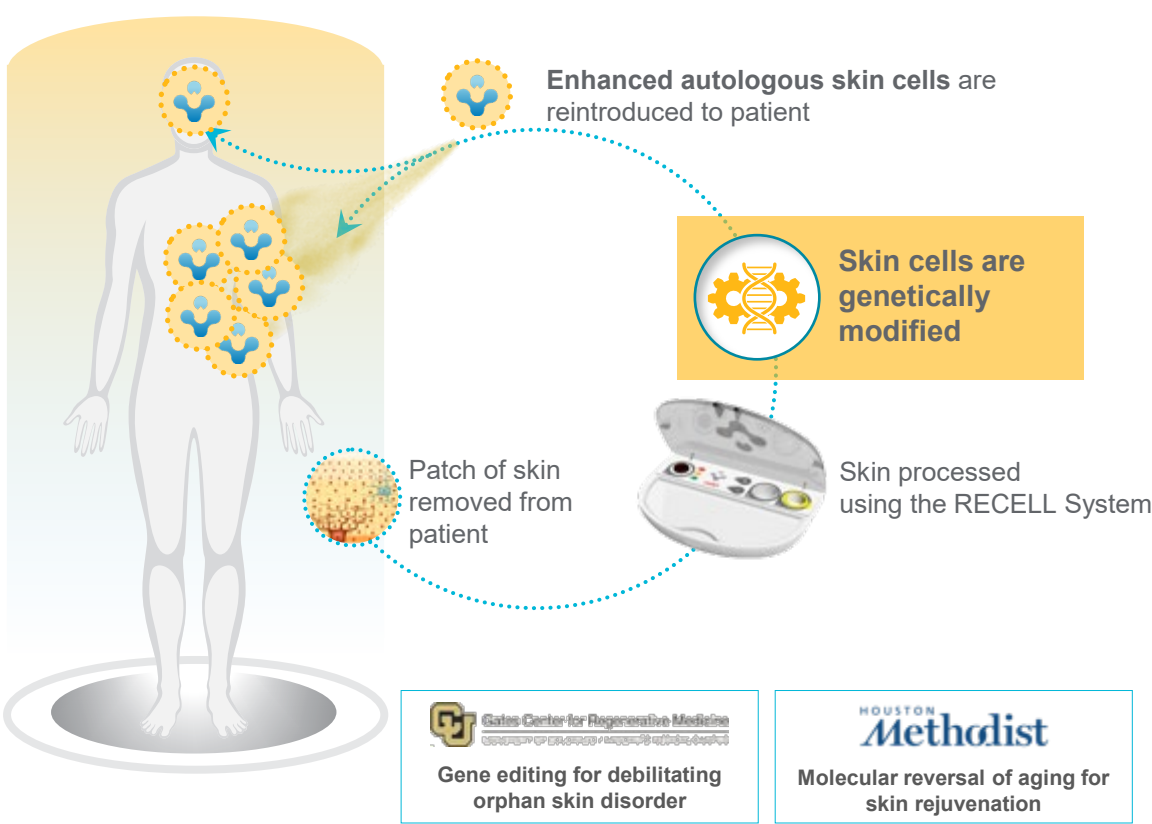
CURRENT PLATFORM

Treatment using RECELL for harvesting and direct reintroduction of the patient's own healthy skin cells



FUTURE PLATFORM

RECELL as a platform for treatment using the patient's corrected skin cells



Cell and Gene Therapy Development Activity

FOUR KEY STEPS

Proof of Concept



FDA Interaction



IND-enabling Studies



First-in-human (IND)

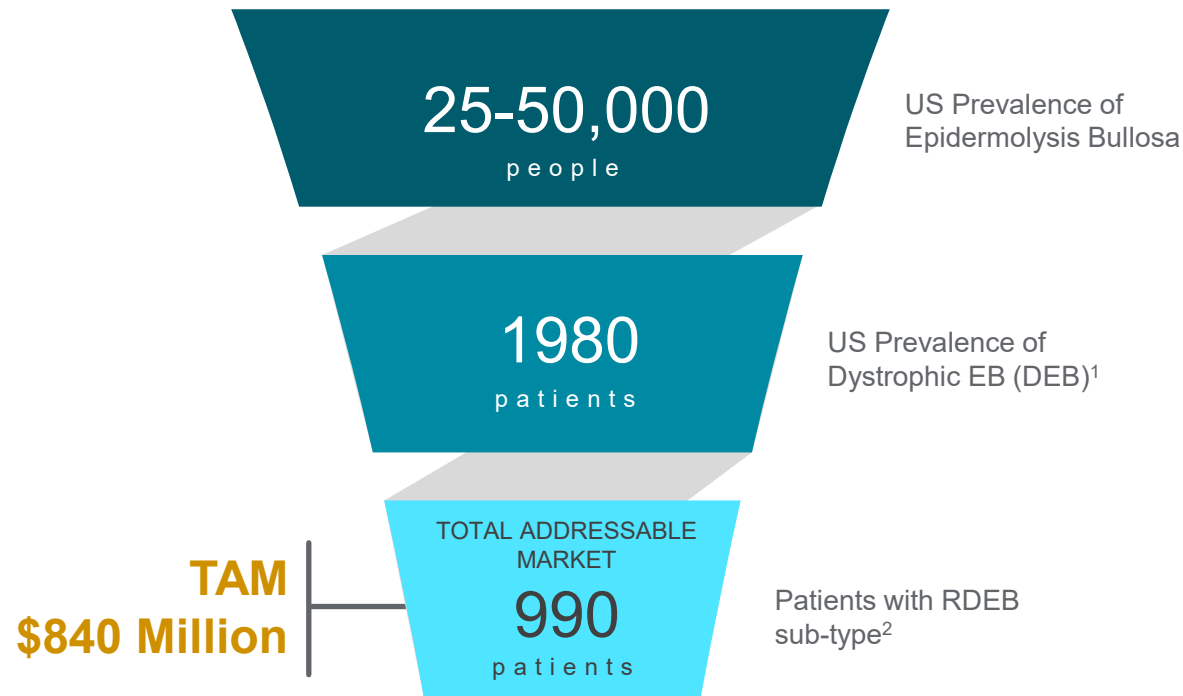


Program Objective:

Optimize Spray-On Skin™
Cells with *modified* skin
cells and establish IND-
readiness

Sizeable Market Opportunity Estimated in EB, Given Orphan Pricing Potential

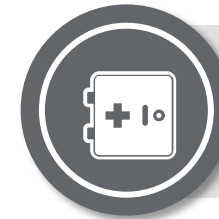
OPPORTUNITY ESTIMATION



POTENTIAL COMPETITIVE ADVANTAGES



Suspension is potentially more cost effective to generate, transport and apply vs cultured sheet grafts



iPSC-based technology enables banking of cells for future treatments



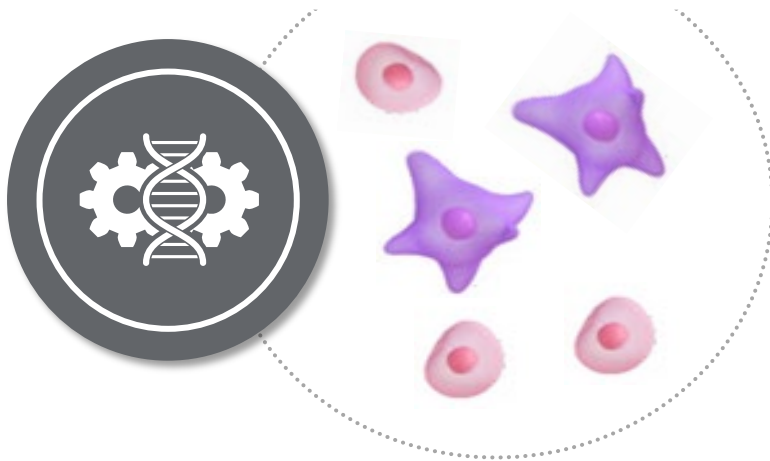
Ex vivo gene editing of skin cells has a safety advantage over *in vivo* gene therapeutics

~\$840M target US market opportunity, assuming \$850,000⁴ per patient / treatment

1. Has et al, "Consensus reclassification of inherited epidermolysis bullosa and other disorders with skin fragility." Br J of Dermatology. 2020. Range 1,100-2,500. 2. DEB prevalence estimated as 6/million. RDEB estimated to be approximately half of DEB prevalence = 3/million. Range: 1.35- 8/million. Fine et al, "Epidemiology of Inherited Epidermolysis Bullosa..." JAMA, 2016. 3.. Luxturna (gene therapy for a rare, inherited retinal disease that can lead to blindness) was priced at \$850,000 for a population between 1000-2000 patients in US. Zolgensma for spinal muscular atrophy is priced at \$2.1 million

Successful reverse-differentiation (induced pluripotency) and gene correction of Recessive Dystrophic Epidermolysis Bullosa (RDEB) Skin Cells

Correction of RDEB Single-Site Mutation



In Vivo Evaluation of Gene-corrected Skin Cells

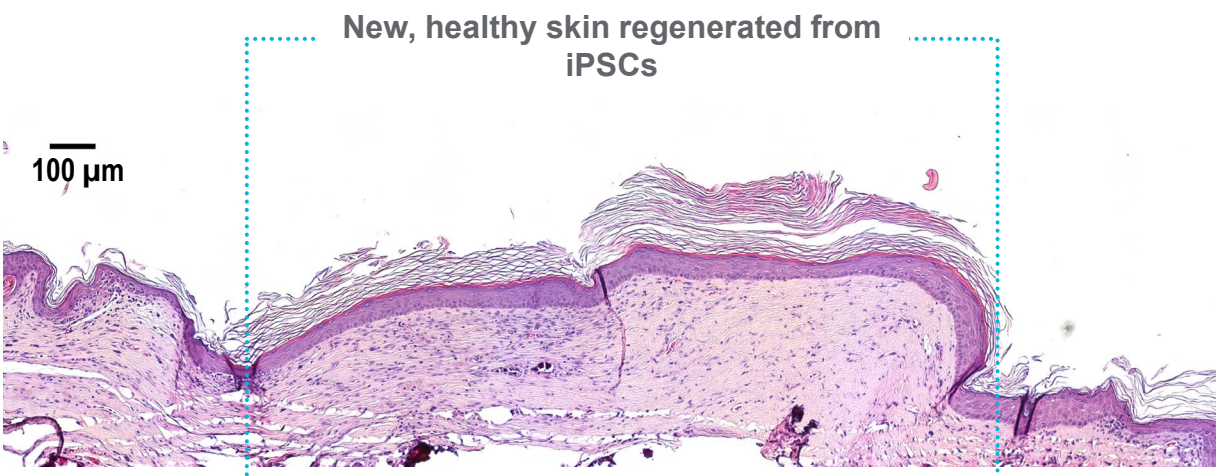
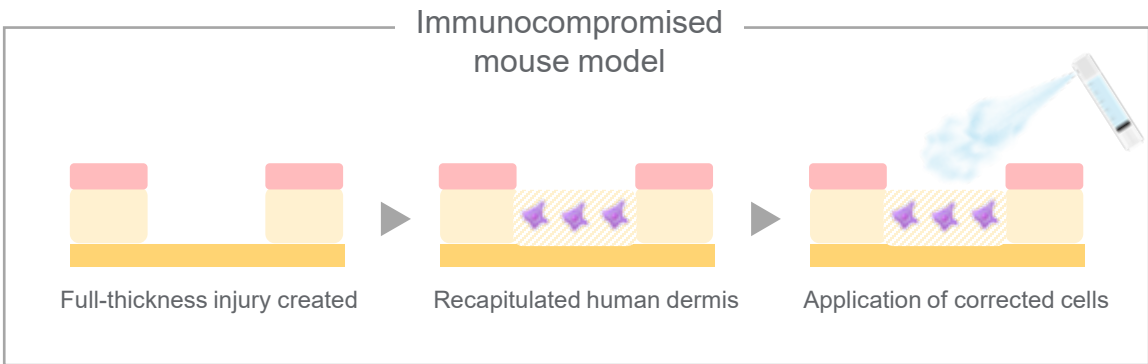


Image courtesy of Gates Center for Regenerative Medicine, University of Colorado

Exploring Cell-Based Gene Therapy for Epidermolysis Bullosa

THE CHALLENGE



DEBILITATING

Skin fragility,
disability, cancer

HIGH UNMET NEED

No FDA-approved
treatment, only
palliative measures

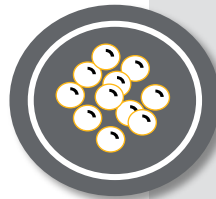
COST BURDEN

Care of \$200K-
\$500K per year per
patient

THE OPPORTUNITY



CURATIVE: Technology for precise correction of genetic defect & banking for future use (vs ameliorating symptoms)



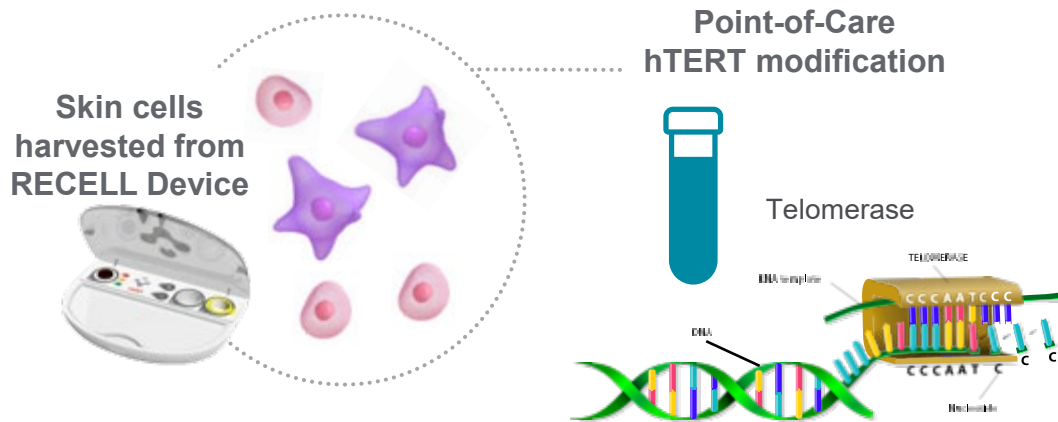
EFFICIENT: Suspension-based approach eliminates growth & transport of fragile skin sheets



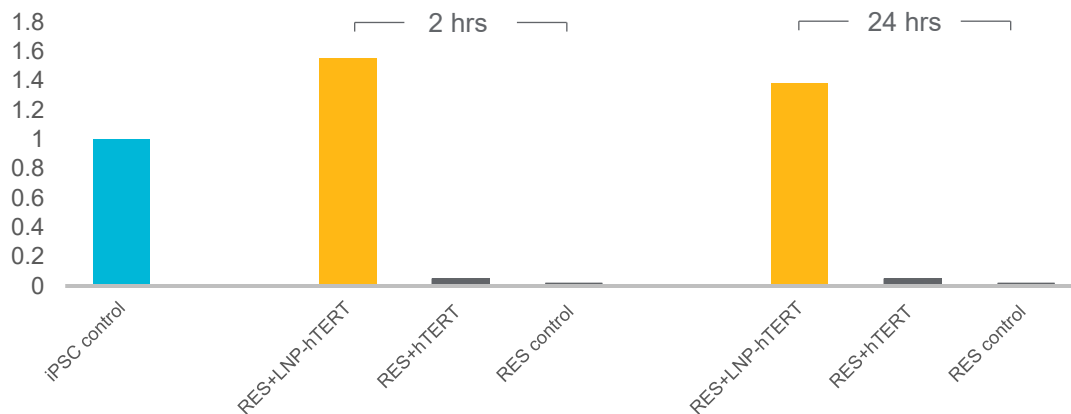
CONVENIENT: Suspension-based product simplifies application onto patient wounds (vs surgical anchoring of epidermal sheets which can result in issues with “take rates”)

Reverse Aging of Skin Cells Derived using the RECELL Device

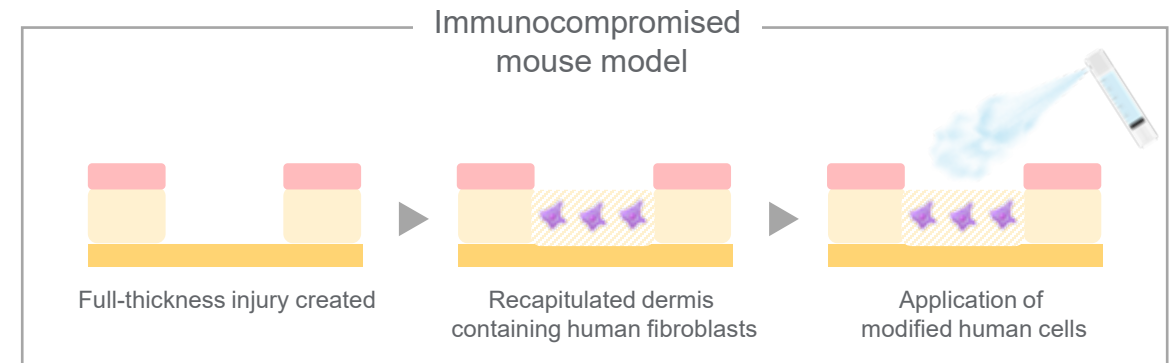
Successful delivery of mRNA-hTERT & expression in Skin Cells Derived from RECELL



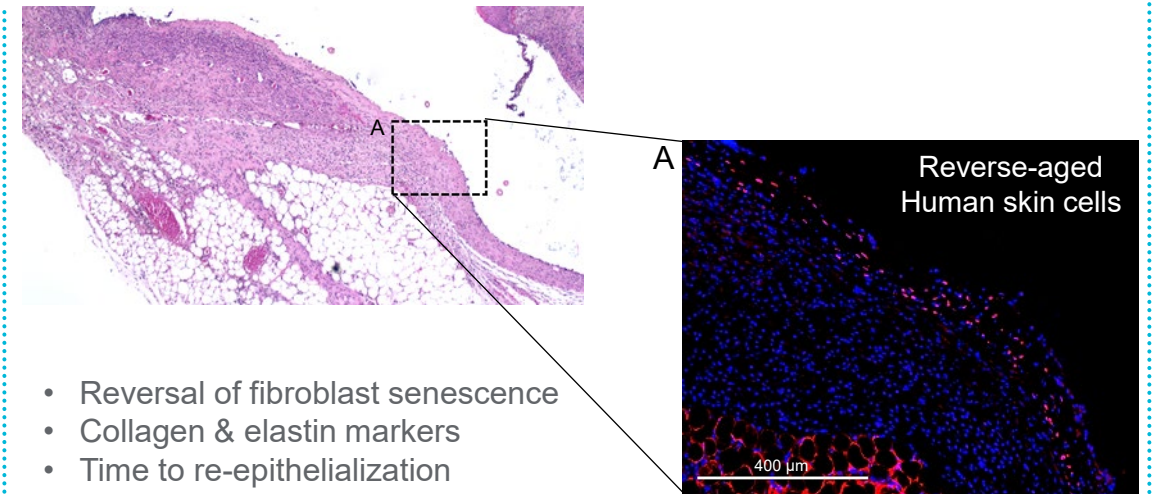
TELOMERASE PRODUCT QUANTIFICATION



In Vivo Evaluation of mRNA-hTERT Modified Skin Cells



On-going Characterization



Exploring Novel RNA-Based Approach for Rejuvenation



HOUSTON
Methodist
LEADING MEDICINE



avita^{medical}

- **Patented RNA technology** for delivery of telomerase enzyme to aged cells
- **Demonstrated reversal of aging** and return of functionality in cells of progeria patients (human model of accelerated aging)

- Patented and proprietary **Spray-On Skin™ Cells technology and device (RECELL)**
- **Expertise in skin** regeneration, including in preclinical models
- Strong track record and expertise in clinical development and commercialization

Patient Funnel and Addressable Market

~8.3M
PEOPLE/Yr

People Who Underwent Facial Aesthetic Procedures Aimed at Improving Skin Tightness, Texture & Evenness in Skin Tone ¹

~1M
PATIENTS/Yr

Target: People Who Undergo Aggressive Facial Lifting & Tightening Procedures²

\$15 Billion TAM

Sponsored research exploring use of telomerase for molecular reversal of skin cell aging

*1. 2020 Plastic Surgery Statistics Report, 2. 2020 Plastic Surgery Statistics Report (Defined as Facelifts, Ablative Laser, Dermabrasion, Non-Surgical Skin Tightening)
In the U.S., RECELL is approved for acute thermal burns in patients > 18 years. Use of RECELL in other indications is either (1) limited by United States law to investigational use; or (2) otherwise prohibited.



Corporate

avita^{medical}

Financial Overview

(USD in \$000s)	12 Months Ended June 30				Unaudited 12 Months Ended December 31		Unaudited 12 Months Ended March 31	
	2018	2019	2020	2021	2020	2021	2021	2022
Commercial Sales	929	5,474	14,263	21,483	17,918	25,091	4,622	7,446
BARDA Sales	-	-	-	7,749	-	7,934	4,143	93
Total Revenue	929	5,474	14,263	29,232	17,918	33,025	8,765	7,539
Gross Profit	383	4,203	11,290	23,283	14,660	26,921	6,619	5,761
BARDA Income	7,734	5,921	3,926	2,055	2,534	1,590	570	734
Cash, Cash Equivalents & Marketable Securities	10,986	20,174	73,639	110,746	59,765	104,852	114,879	95,054

Analysts

- Matt O'Brien, Piper (U.S.)
- Josh Jennings, Cowen (U.S.)
- Ryan Zimmerman, BTIG (U.S.)
- Brooks O'Neil, Lake Street (U.S.)
- Lyanne Harrison, BofA Global Research (AUS)
- Shane Ponraj, MorningStar (AUS)
- Chris Kallos, MST (AUS)
- John Hester, Bell Potter (AUS)
- Shane Storey, Wilsons (AUS)

NASDAQ ticker
symbol:
RCEL

ASX ticker
symbol:
AVH




A Global Total of 19 Granted Patents & 23 Pending Applications



ROBUST PROTECTION ACROSS PATENT FAMILIES

Cell Suspension Preparation Technique and Use	Commercial RECELL device, composition of matter, and associated methods of use
Cell Suspension And Use Thereof	Method of preparing cell suspension with exogenous agent to promote wound healing
Systems and Methods for Tissue Processing and Preparation of Cell Suspension Therefrom	Automated system for preparing cell suspension and method of production
Devices, Methods, and Kits for Preparing a Cell Suspension	All-in-one RECELL kit, system, and associated method of use
Methods and Systems for Identifying a Cell Suspension with Therapeutic Potential and Related Compositions	Methods and systems for validating the use of a cell suspension for administration to a patient
Regenerative Bioactive Suspension Derived From Freshly Disaggregated Tissue	Cell-free supernate form of RES, which has standalone regenerative activity

EXPANDING PORTFOLIO TO SUPPORT CURRENT AND FUTURE INDICATIONS

-  Next Generation RECELL devices to improve ease of use in burns and pipeline indications
-  Potential to license patented technology for telomerase mRNA that has the potential to reverse aging of skin cells
-  Potential to license technologies for suspension-based delivery of genetically modified cells, with applications to genetic skin disorders

Robust and Expanding Patent Estate:
Expiration through 2040

AVITA Leadership Team



Dr. Michael S. Perry
CEO
>30 years experience



Michael Holder
CFO
>30 years experience



Erin Liberto
CCO
>20 years experience



Andrew Quick
CTO
>25 years experience



Kathy McGee
COO
>25 years experience



Donna Shiroma
General Counsel
>20 years experience

Affiliations:

NOVARTIS
Schering-Plough
BAY CITY CAPITAL
Baxter
GENETIC THERAPY, INC.

Affiliations:

ImmuneCyte
PREMIER
CAROLINA LONGEVITY INSTITUTE

Affiliations:

Allergan
Johnson & Johnson

Affiliations:

Boston Scientific
AB
sonova
Sonamed Corp

Affiliations:

Shire
at advanced tissue
SmithNephew

Affiliations:

ASCEND THERAPEUTICS
A BESINS HEALTHCARE Company
Innovators in Women's Health
PDL BioPharma
Johnson & Johnson

Recent Key Accomplishments



- First Quarter 2022 Revenue Growth of +61% YoY
- FDA Approval of New “Ease of Use” RECELL Device
- Vitiligo Pivotal Trial: Enrollment Complete
- Soft Tissue Pivotal Trial: Enrollment Completed
- TPT Payment Created by CMS for Hospital Outpatient Settings
- PMDA Approval of Burns in Japan
- Initial Proof of Concept for EB and Rejuvenation (Delivery of Modified Skin Cells in Suspension)

Projected Key Milestones



- | | |
|---|-----------------|
| • Launch of New “Ease of Use” RECELL Device | Q2 '22 |
| • FDA Meeting Regarding IND Enabling Studies (EB & Rejuvenation) | H2 '22 |
| • Reimbursement & Launch of Burns in Japan | H2 '22 |
| • Top Line Results and Vitiligo FDA Submission / Vitiligo Commercial launch | H2 '22 / H2 '23 |
| • Top Line Results and Soft Tissue FDA Submission / Soft Tissue Commercial Launch | H2 '22 / H2 '23 |

- There are numerous risk factors involved with the Company's business. Some of these risks can be mitigated by the use of safeguards and appropriate systems and controls, but some are outside the control of the Company and cannot be mitigated. Accordingly, an investment in the Company carries no guarantee with respect to the payment of dividends, return of capital or price at which securities will trade. The following is a summary of the more material matters to be considered. However, this summary is not exhaustive. Potential investor should consult their professional advisors before deciding whether to invest.
- Technological Change: Technological change presents the Company with significant opportunities for growth. However, the risk remains that any competitor may introduce new technology enabling it to gain a significant competitive advantage over the Company.
- Reliance on key personnel: The Company's success depends to a significant extent upon its key management personnel, as well as other management and technical personnel including sub-contractors. The loss of the services of any such personnel could have an adverse effect on the Company.
- Competition: The Company competes with other companies in the United States as well as in Australia and internationally. Some of these companies have greater financial and other resources than the Company and, as a result, may be in a better position to compete for future business opportunities. There can be no assurance that the Company can compete effectively with these companies.
- Patent Protection: The patent protection that the Company may obtain varies from product to product and country to country and may not be sufficient, including to maintain product exclusivity. Patent rights are also limited in time and do not always provide effective protection for products and services: competitors may successfully avoid patents through design innovation, the Company may not hold sufficient evidence of infringement to bring suit, or the infringement claim may not result in a decision that the rights are valid, enforceable or infringed. Legislation or regulatory actions subsequent to the filing date of a patent application may affect what an applicant is entitled to claim in a pending application and may also affect whether a granted patent can be enforced in certain circumstances. Laws relating to biotechnology remain the subject of ongoing political controversy in some countries. The risk of changed laws affecting patent rights is generally considered greater for the biotechnology field than in other longer established fields.
- Change in government policy and legislation: Any material adverse changes in relevant government policies or legislation of Australia / United States may affect the viability and profitability of the Company, and consequent returns to investors. The activities of the Company are subject to various federal, state and local laws governing prospecting, development, production, taxes, labor standards and occupational health and safety, and other matters.

Important Safety Information

- **INDICATIONS FOR USE:** The RECELL® Autologous Cell Harvesting Device is indicated for the treatment of acute thermal burn wounds. The RECELL device is used by an appropriately-licensed healthcare professional at the patient's point of care to prepare autologous RES® Regenerative Epidermal Suspension for direct application to acute partial-thickness thermal burn wounds in patients 18 years of age and older or application in combination with meshed autografting for acute full-thickness thermal burn wounds in pediatric and adult patients. .
- **CONTRAINDICATIONS:** RECELL is contraindicated for: the treatment of wounds clinically diagnosed as infected or with necrotic tissue, the treatment of patients with a known hypersensitivity to trypsin or compound sodium lactate (Hartmann's) solution, patients having a known hypersensitivity to anesthetics, adrenaline/epinephrine, povidone-iodine, or chlorhexidine solutions.
- **WARNINGS:** Autologous use only. Wound beds treated with a cytotoxic agent (e.g., silver sulfadiazine) should be rinsed prior to application of the cell suspension. RECELL is provided sterile and is intended for single-use. Do not use if packaging is damaged or expired. Choose a donor site with no evidence of cellulitis or infection and process skin immediately. A skin sample should require between 15 and 30 minutes contact with Enzyme. Contact in excess of 60 minutes is not recommended. RECELL Enzyme is animal derived and freedom from infectious agents cannot be guaranteed.
- **PRECAUTIONS:** RECELL is not intended for use without meshed autograft for treatment of full-thickness burn wounds. The safety and effectiveness of RECELL without meshed autograft have not been established for treatment of partial-thickness burn wounds: on the hands and articulating joints, >320 cm², in patients with wounds totaling >20% total body surface area (TBSA). The safety and effectiveness of RECELL with autografting have not been established for treatment of full-thickness burn wounds: on the hands and articulated joints, and in patients younger than 28 days of age (neonates).
- **SPECIAL PATIENT POPULATIONS:** The safety and effectiveness of RECELL have not been established for treatment of acute thermal partial-thickness burn wounds in pediatric patients younger than 18 years of age.

Revolutionary
treatment using a
patient's own skin
for life-changing
outcomes

avita^{medical}



Zed, treated with the RECELL® System

In the U.S., RECELL is approved for acute thermal burns. Use of RECELL in other indications is either (1) limited by United States law to investigational use; or (2) otherwise prohibited.

RECELL Process For Autologous Cell Harvesting and Application



RECELL Spray-On Skin™

Treats 80cm² of Skin from a 1cm² Biopsy

AUTOLOGOUS

Cell Harvesting Device that delivers Spray-On Skin Cells within 30 minutes at the point of care

COMPLETE

Full range of skin cell types with re-pigmentation

ACTIVATED

Fresh (non-cultured cells) with the “free edge healing cascade”

SPLIT-THICKNESS SKIN GRAFT DONOR SITE



SAFE & EFFECTIVE

2 randomized controlled trials supporting PMA
1st PMA burn product approval ~20 yrs
10K+ patients worldwide
>150 peer reviewed articles

DONOR SPARING

Treatment area = 80x donor area
(credit card size skin sample can treat an entire adult back)

RECELL DONOR SITE

PUBLISHED HEALTH ECONOMIC DATA

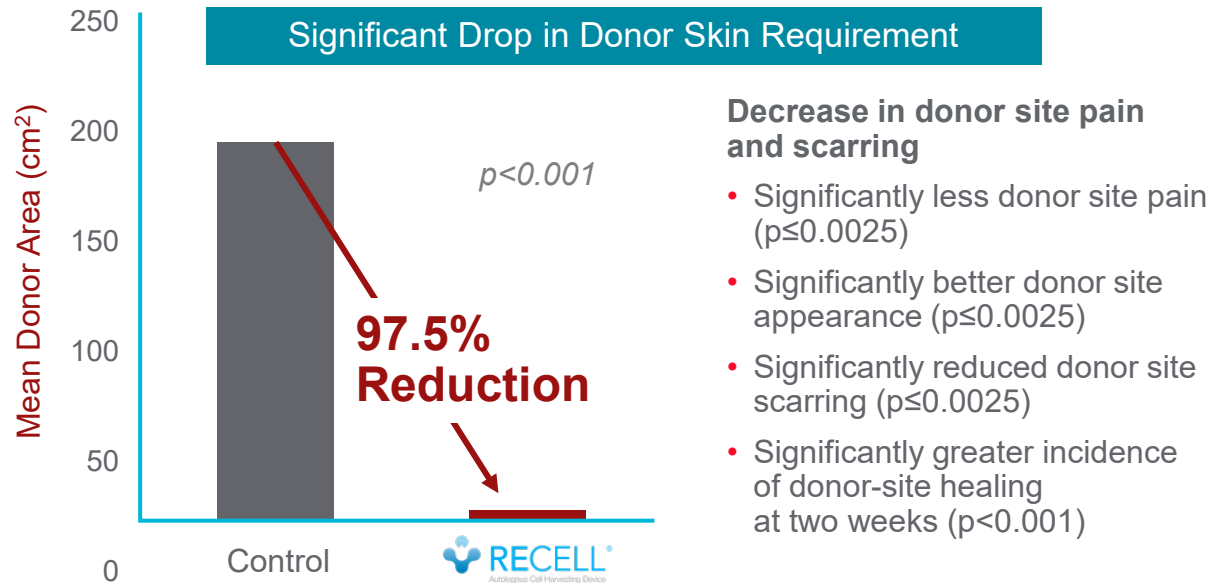
Demonstrating significant savings to the health care system

1st Premarket Approval Treatment in Burns in 20 Years

Dual multi-center, randomized, controlled premarket approval studies

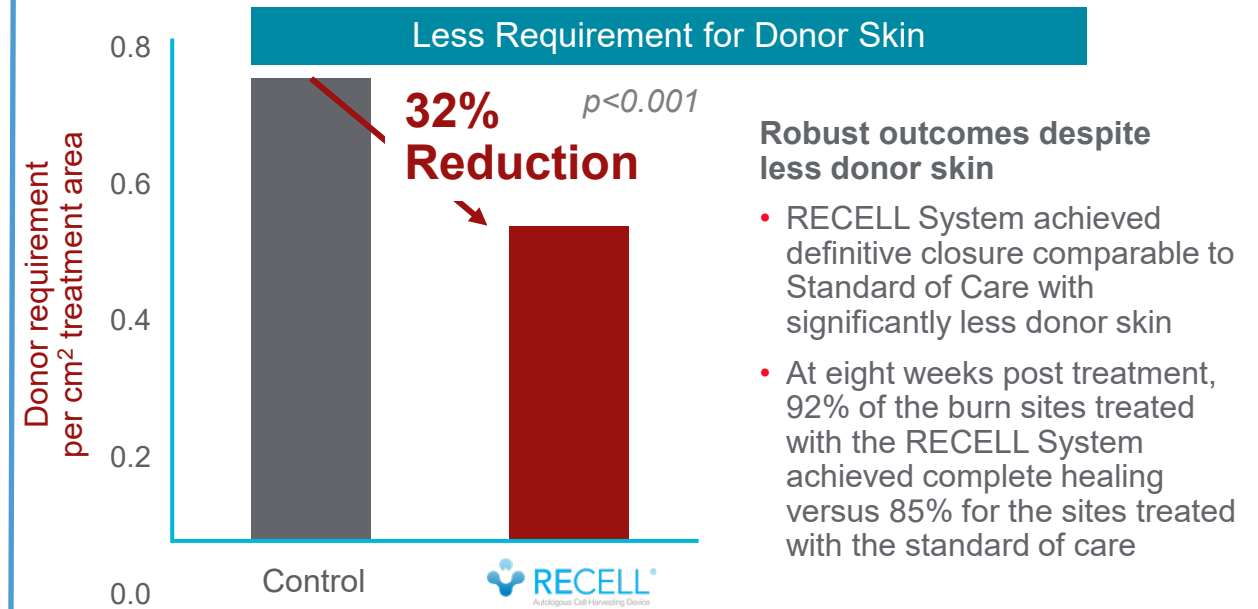
Pivotal Trial #1 (101 Patients) RECELL (alone) versus SoC (STSG) in Second-Degree Burns

Published in JBCR and Presented at ABA



Pivotal Trial #2 (31 Patients) RECELL (with widely expanded graft) versus STSG in Third-Degree Burns

Published in Burns and Presented at ABA

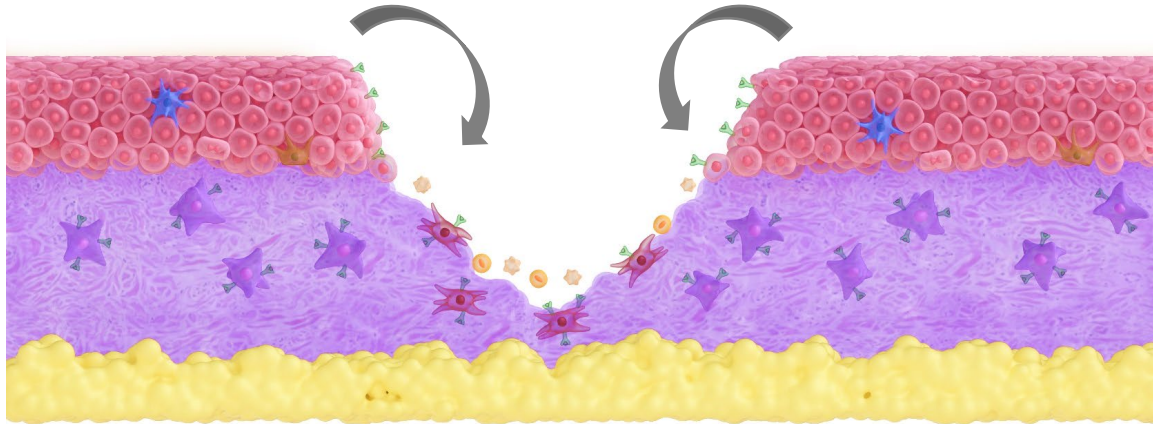


Comparable healing and long-term outcomes for burn sites with significantly less donor skin required

RECELL “Free Edge” Advantage

Healing Process **without** RECELL

Free edge limits signaling
to wound boundary
(i.e. outside → in)



Cytokine

Inflammatory Cell

Myofibroblast

Growth Factor

Receptor

Fibroblast

Keratinocyte

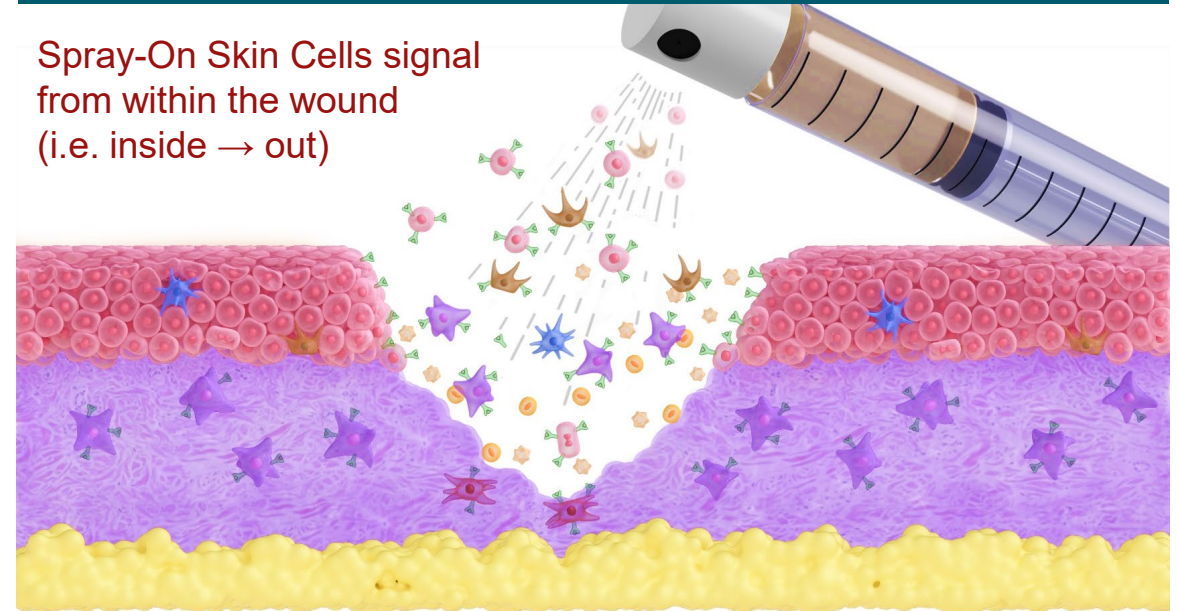
Stem Cell

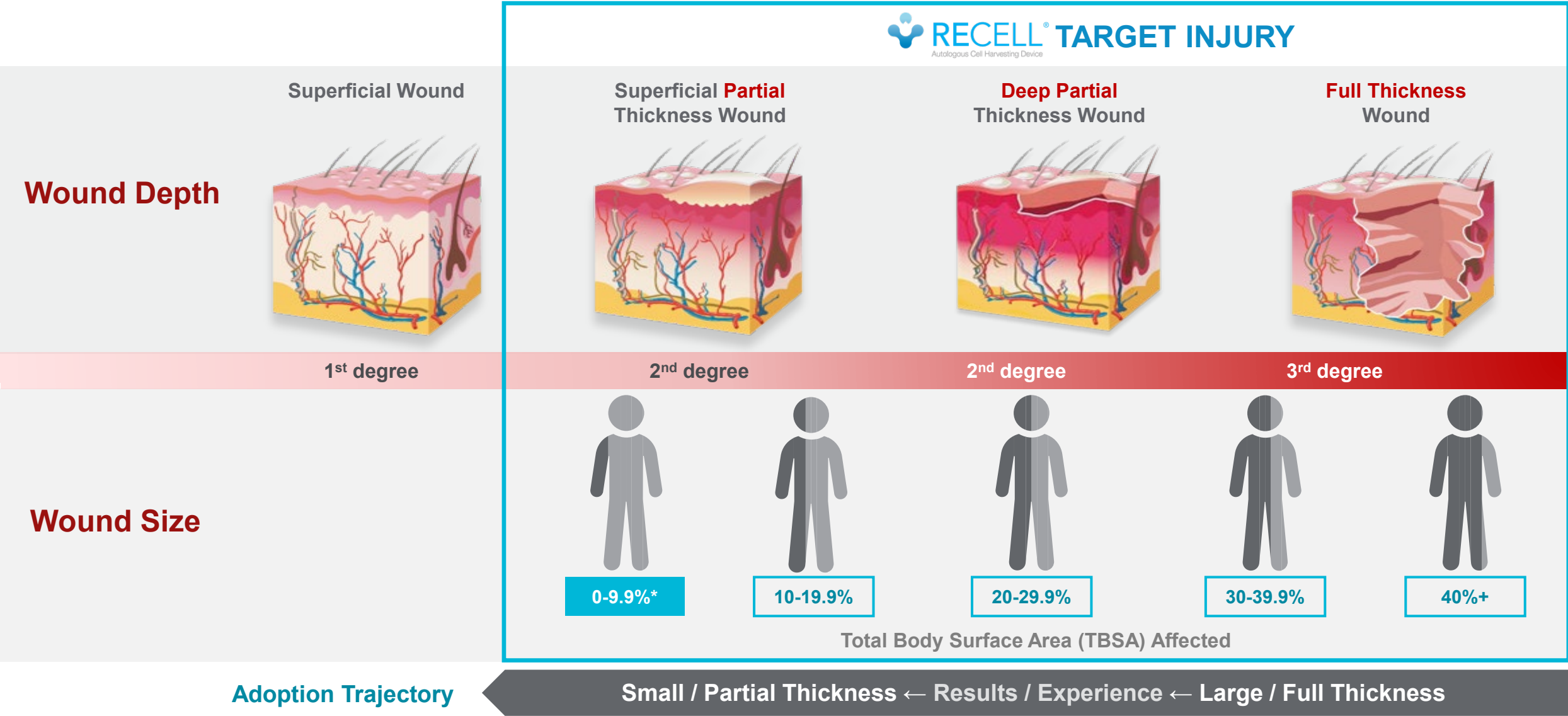
Melanocyte

Langerhans Cell

Healing Process **with** RECELL

Spray-On Skin Cells signal
from within the wound
(i.e. inside → out)



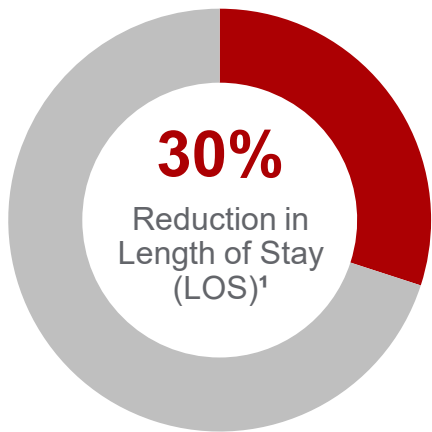


Published Health Economic Model: Demonstrates Patient and Health Care System Benefits

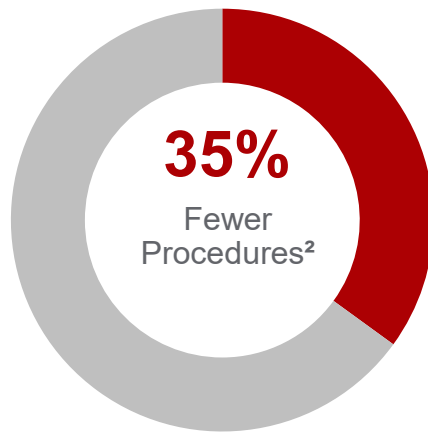
RECELL saves the hospital money in in-patient scenarios where the burn is 10% Total Body Surface Area (TBSA) or greater

Transforming Care

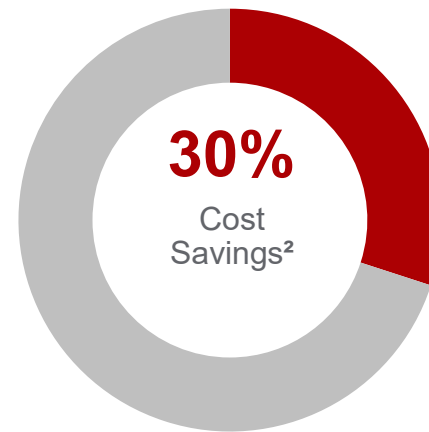
Can reduce costs and accelerate recovery by decreasing the number of painful procedures and length of stay in hospital



Fewer procedures and faster healing times get patients home more quickly



Reduced donor site size and greater meshing ratio enables permanent closure with fewer invasive autograft procedures



Shorter and fewer procedures, decreased length of stay, and reduced resource use translates into burn center savings

VALIDATED MODEL

- 21 abstracts on RECELL health economics since launch
- 17+ Burn Centers contributing to the RECELL abstracts and publications
- Two publications
- Customized Budget Impact calculator
- Leader of health economics in burns

1. Park JH, Heggie KM, Edgar DW, Bulsara MK, Wood FM. Does the type of skin replacement surgery influence the rate of infection in acute burn injured patients? Burns 2013;39:1386-90. <https://doi.org/10.1016/j.burns.2013.03.015>
2. Kowal, S., Kruger, E., Bilir, P. et al. Adv Ther (2019). <https://doi.org/10.1007/s12325-019-00961-2>